

Canon

 Color
imageRUNNER
C 3 2 0 0

True Multifunctionality
Now Comes in Color.
Only From Canon.



Pure Productivity

CONCURRENT MULTIFUNCTIONALITY



Full Concurrency

UNMATCHED VERSATILITY



Workflow Control

COMMUNICATIONS MANAGEMENT



WHEN YOUR BUSINESS DEMANDS EXCELLENCE IN EVERY FACET OF YOUR COMMUNICATIONS, ONLY THE CANON COLOR imageRUNNER C3200 DELIVERS.

Introducing the Color imageRUNNER C3200, the only solution that supports a full suite of communication functions to meet your every business need.

Multifunctionality is no longer just about executing several tasks at one device. True multifunctionality entails integrated software solutions, streamlined user-interfaces, enhanced security measures, simple device management, full concurrency, and two-way communications. While there are plenty of devices available that print, scan, copy, fax, and store, only Canon delivers the revolutionary technologies that raise the standard to a whole new level.

In fact, the Color imageRUNNER C3200 puts the power of document creation, distribution, and management where it belongs—in your office. Delivering unsurpassed productivity and versatility to every corporate workgroup user, the Color imageRUNNER C3200 incorporates four-drum, single-pass engine technology, while achieving speeds up to 32 pages per minute—for both color *and* black-and-white output.

But its versatility doesn't stop there. In addition to superior copy, print, and scan performance, through its Universal Send™ technology, the Color imageRUNNER C3200 is your central color communications hub. Leveraging the vast power of corporate networks and the Internet, the Color imageRUNNER C3200 makes seamless workgroup collaboration a reality by allowing users to deploy all forms of information with unprecedented speed and unparalleled convenience.



Powerful Engine Performance

Get the performance you need to keep your business moving...

The Color imageRUNNER C3200 is designed to withstand the punishment of busy corporate environments, and easily handle the load of several stand-alone devices, allowing every workgroup to maximize performance in a compact, user-friendly design.

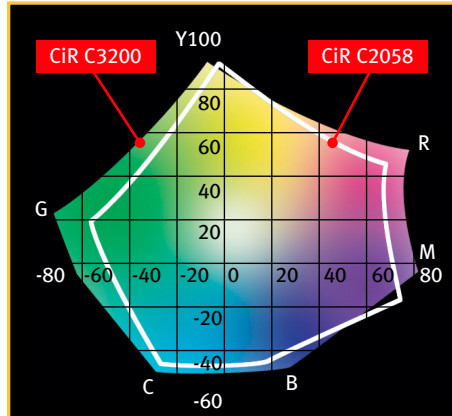
The Color imageRUNNER C3200 boasts a full-color scanner to capture every detail with amazing precision, processing 23 color pages per minute (36 pages in black-and-white mode) at true 600 x 600 dpi resolution.

Incorporating four-drum, single-pass engine technology, the Color imageRUNNER C3200 achieves speeds up to 32 pages per minute—for both color and black-and-white output. Plus, standard stackless duplexing enables the Color imageRUNNER C3200 to meet your two-sided output needs at speeds of up to 27 images per minute. Twin laser beam technology, built into each of the four imaging units, helps to realize these productive speeds while delivering the outstanding image quality you've come to expect from Canon.

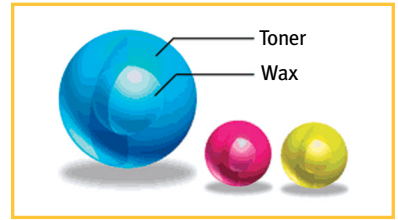
Canon's exclusive Super Smoothing Technology (SST) at work in the Color imageRUNNER C3200 supports up to 2400 equivalent x 600 dpi resolution with image stabilization and gradation adjustment technologies that make every image sharp, every gradation

smooth, every text character crisp. And, Canon's third-generation oil-free S Toners produce eye-catching color with just a touch of gloss—perfect for office applications.

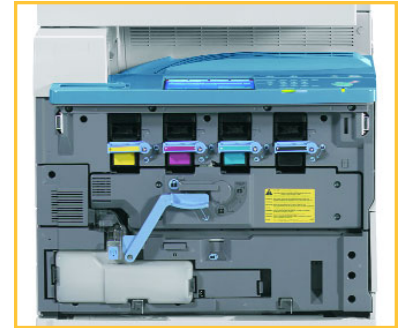
Canon's implementation of Intermediate Transfer Belt technology provides for a shorter, flatter paper path, supporting the system's high output speeds while allowing for accurate printing on heavyweight stocks. With versatile cover and sheet insertion modes, and the ability to create printed tabs, there's nothing the Color imageRUNNER C3200 can't do for you in-house; reducing costs, speeding job turnaround, and preserving confidentiality.



Canon's third-generation S Toners offer a 30% larger color space. Oil-free fixing delivers output better suited to everyday office printing needs.



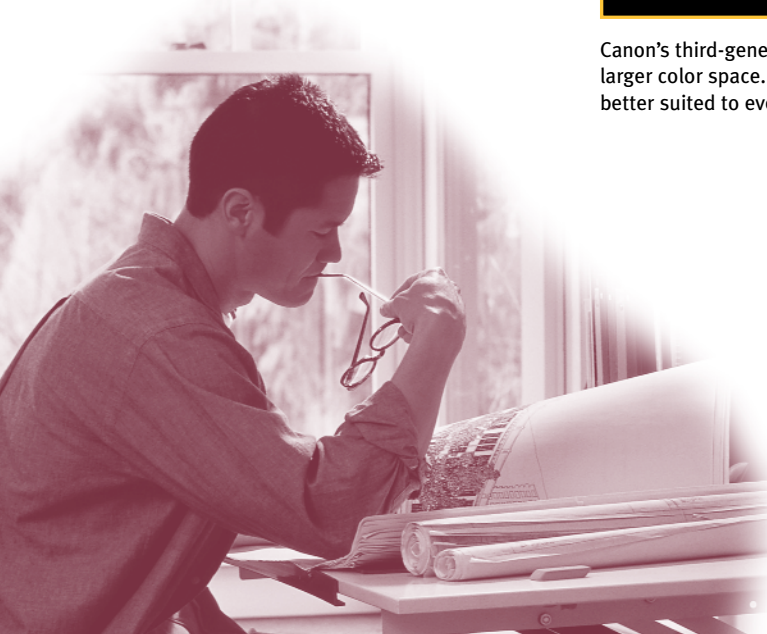
Canon's S Toner consists of a wax inner layer and polymer outer layer. The result is smooth images that replicate reality.



The space-saving design of the four-drum, single-pass engine contributes to a compact footprint and easy maintenance.



Set-on toner cartridge design allows for easy, clean toner replacement.



Speed your business...



The Color imageRUNNER C3200 does it all, so you can do more with less—less headaches, less downtime, less hassle. From productive document feeding to professional finishing, the Color imageRUNNER C3200 stands above the rest—bringing the speed, image quality, and reliability you need to meet every deadline.

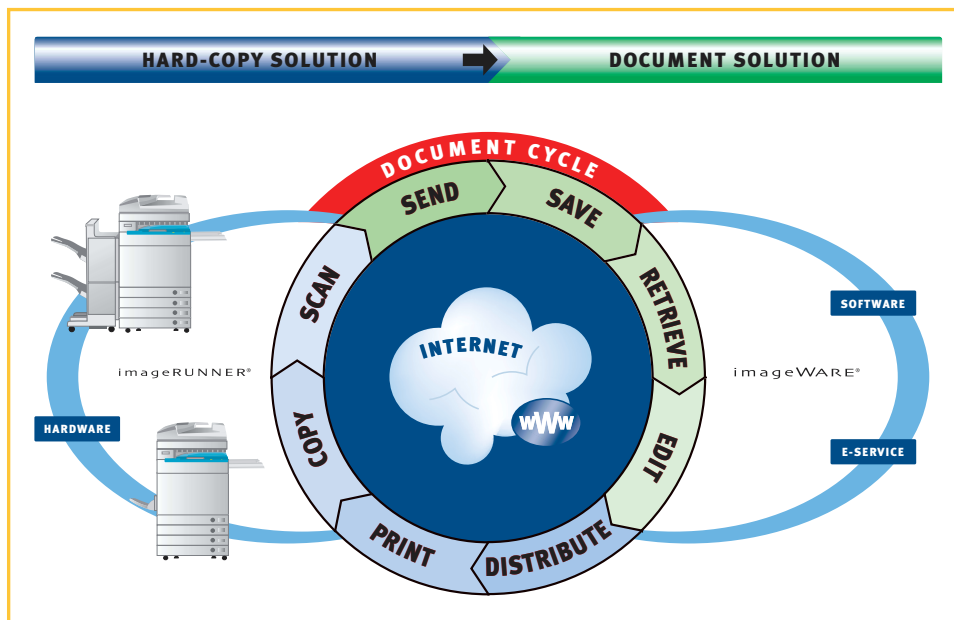
The user-friendly control panel with its full-color display makes it easy for walk-up users to control every aspect of their job.

To keep pace with your business, the Color imageRUNNER C3200 has the processing power and memory capacity to execute multiple jobs simultaneously—Canon's definition of true multifunctionality.

and images for fast and easy access right at the system, through a full-color user-interface panel or from any desktop via Remote UI.™

Featuring an innovative dual processor design, 768MB RAM and a 40GB hard disk standard, the Color imageRUNNER C3200 eliminates bottlenecks and improves efficiency across every facet of your business—without sacrificing speed or image quality. Plus, the Hard Disk provides the virtual space to store files

For even greater productivity, the Color imageRUNNER C3200 supports Scan-Once-Print-Many technology so walk-up users can feed originals for scanning only once. With 5-job Copy Reservation, users can program all modes and scan originals into memory for up to five jobs while the system is printing—a perfect fit for busy multiuser environments.



The Color imageRUNNER C3200 now lets you enter and exit the document lifecycle at any point. Convert hard-copy originals to digital form; digitize paper-based documents; even edit, save, and distribute electronic files without ever producing paper.

Automate your business...



Give every document a professional look with the Color imageRUNNER C3200's versatile paper handling and finishing capabilities.

The optional Duplexing Automatic Document Feeder (DADF-K1) can reduce paper handling chores and increase your productivity. It automatically feeds up to 30 one- or two-sided originals. Plus with Job Build, you can process jobs that exceed the capacity of the feeder, as well as integrate documents scanned through the feeder with those placed on the platen glass.

The Color imageRUNNER C3200 features dual 550-sheet front-loading paper cassettes that are user-adjustable, and can accommodate paper sizes up to 12" x 18" in weights up to 110 lb. Index. For increased paper versatility, you can add two more 550-sheet cassettes and

a 2,700-sheet paper deck for uninterrupted productivity. What's more, the standard 100-sheet Stack Bypass tray gives you the convenience of copying on stocks as large as 12.6" x 18," in weights up to 140 lb. Index—including job tab paper, envelopes, and prepunched paper.

There's a choice of three output options to fit every need and budget. From simple collating and stapling, to advanced saddle-stitched booklets, the Color imageRUNNER C3200 automates every step of the document finishing process. All available finishing modes are accessible to every user for every job. Just one more way Canon technology helps you work smarter.



Feed stacks of single- or two-sided originals for copying, scanning, storing, or sending through the versatile DADF.



Finisher-M1



Finisher-N1



Saddle Finisher-N2

Choose the Finisher-M1 for simple stapling and collating tasks, or step up to the Finisher-N1 for increased stacking capacity and stapling versatility. For the ultimate in finishing productivity, the Saddle Finisher-N2 offers multiposition stapling, automatic saddle-stitching and folding for booklet production.



Feed stocks up to 110 lb. Index, and as large as 12" x 18," through all paper cassettes; and stocks up to 140 lb. Index through the 100-sheet Stack Bypass.

Concurrent Multifunctionality

Get the versatility you require to communicate across the room or across the globe...

Once you connect to the network, the Color imageRUNNER C3200 is transformed into a document distribution and production powerhouse, enabling you to leverage your investment in your network infrastructure to print, scan, send, and store documents in ways no other device can match.

A New Level of Printing Flexibility

When it comes to printing, nobody does it better than Canon, and no other solution gives you more flexibility than the Color imageRUNNER C3200.

Choose from two print controller options, the Canon-designed Color Network Multi-PDL Printer Kit-A1, or the imagePASS-C1, co-engineered by Canon in partnership with Electronics for Imaging (EFI), the acknowledged industry leader in color network printing solutions.

Color Network Multi-PDL Printer Kit-A1

The Color Network Multi-PDL Printer Kit-A1 delivers color printing capabilities best suited for environments where the primary needs involve Microsoft® Office printing applications. It supports PCL 5c and PostScript® 3™ emulation, and Canon's proprietary new Ultra Fast Rendering* (UFR) technology. Canon's new UFR technology utilizes a newly invented printing algorithm to minimize file processing time and achieve maximum performance.

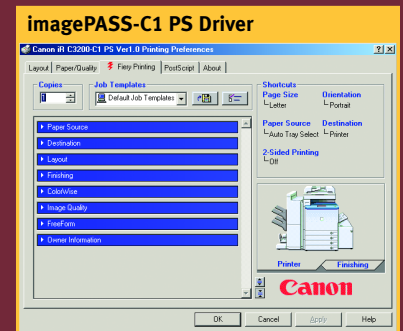
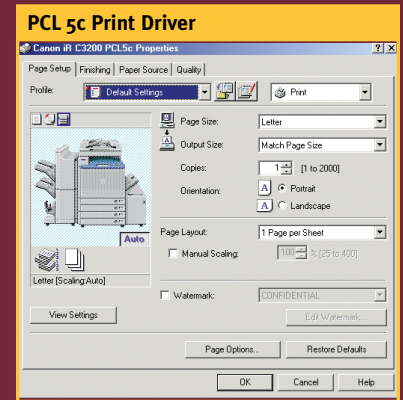
imagePASS-C1

For more demanding applications, including larger workgroups and graphical/page layout application users, choose the imagePASS-C1. This turbocharged print controller features an Intel® Mobile Pentium® III 850MHz CPU, 128MB RAM, and a 10GB hard disk drive dedicated to printing applications. With support for genuine Adobe® PostScript 3 and PCL 5c emulation, the imagePASS-C1 makes fast work of every print job. The Command WorkStation™ offers an intuitive

graphical user-interface for complete control of document production from a centralized location. When paired with the optional DocBuilder Pro™ page imposition technology, users can create finished booklets in-house.

For more sophisticated applications where color accuracy is a priority, the imagePASS-C1 offers standard support for features required by more discerning users. EFI's ColorWise® color management software gives users pinpoint color-matching control. Auto-trapping delivers improved registration through a simple point-and-click operation to fill in white spaces that sometimes appear between butting colored sections of an image. Spot-On™ defines spot colors for increased flexibility when custom-matching colors such as logos and package designs—without skewing other colors within the document.

Whichever controller option you choose, you'll benefit from maximum image quality and system performance. Through intuitively designed print drivers, you can start the document creation process right from your desktop with the ability to access page layout, document finishing, and image quality settings. You can even access advanced features like Edit and Preview (Page Composer),** Secured Print,** Store (to Mail Box),** workflow management tools—and more! For specialized connectivity needs, the Color Network Multi-PDL Printer Kit-A1 offers an optional USB 1.1 interface; and, both it and the imagePASS-C1 offer optional support for Token Ring networks.



* Available for Windows 98/2000/XP/Me operating systems.

** Some restrictions may apply. Please contact your Canon-authorized dealer for the availability of certain features.

Communicate without barriers, share without limits, manage with ease...

When configured with Canon's innovative Universal Send capabilities, and your choice of print controller, the Color imageRUNNER C3200 is both a destination for document storage and output, as well as your on-ramp to the information superhighway.

Universal Send

Canon's innovative Universal Send technology makes it easy to convert color hard-copy originals into digital files for storage or distribution to multiple destinations. Your color documents arrive at every selected destination instantaneously and simultaneously—eliminating the expense and administration associated with printing, forwarding, and filing hard-copy documents.

In one time-saving operation, you can:

- Scan and send documents via the Internet to individual, or groups of, E-mail or Internet Fax addresses.
- Send to network or host folders, files, and document management applications.
- Store documents in a Color imageRUNNER C3200 Mail Box.
- Send documents as Super G3 Fax transmissions (optional).
- Send files back to your desktop for further manipulation.

The Color imageRUNNER C3200's Universal Send function makes these modes as easy to program as making a copy, dramatically improving workflow. An Address Book function organizes and stores up to 1,800 destinations for quick, convenient access right at your fingertips. And because the Color imageRUNNER C3200 supports LDAP (Lightweight Directory Access Protocol), you can access company-wide address books, eliminating manual address entry tasks and managing updates automatically. For even greater productivity, the Address Book Conversion Utility allows you to import existing address books from Lotus Notes, Outlook, and the Canon Fax Driver through Remote UI.

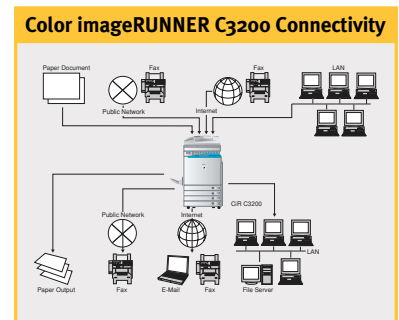
File type flexibility is built in, too. Select from several industry-standard formats including TIFF, MTIFF, JPG, and PDF, ensuring your documents can easily be viewed and printed by any recipient. PDF High Compression Mode processes scanned color data at a high compression rate while retaining the integrity of text and images using Canon's proprietary character recognition algorithm. This allows even complex or detailed color pages to be efficiently handled over the network without affecting image/text legibility, so your communications have minimal impact on network performance, and maximum impact on your audience.

Canon's Color Network ScanGear™ enables users to pull images back to their desktop using TWAIN-compatible software to easily integrate scanned images with your documents.

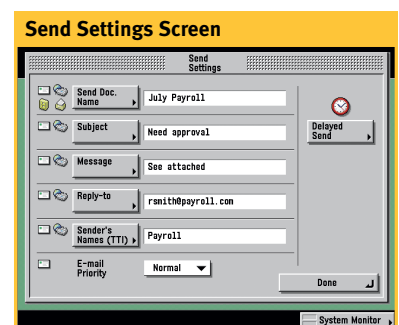
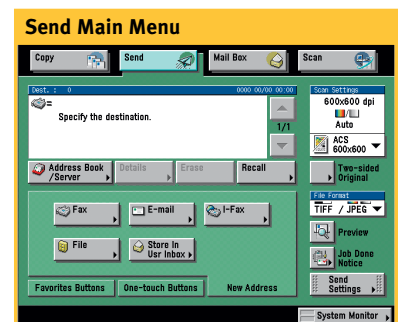
Canon Fax Technology

Install the optional Super G3 Fax Board-M1 and the Color imageRUNNER C3200 operates as a powerful fax machine, transmitting documents as fast as three seconds per page.[†] The Canon Fax Driver,* bundled with the Super G3 Fax Board-M1, makes faxing electronic documents from the desktop as easy as selecting "Print to Fax" on the driver screen and selecting a destination.

The Color imageRUNNER C3200 provides a host of job forwarding features that keep you connected to the office no matter where business takes you. With this capability, incoming documents can be automatically routed to other destinations or databases for remote retrieval or archiving purposes.



The Color imageRUNNER C3200 enables network users to deploy all forms of information, without restriction, to unlimited destinations.



***Requires the Color Network Multi-PDL Printer Kit-A1 or imagePASS-C1.

[†]Approximate 3-second-per-page fax transmission time based on ITU-T No. 1 Chart (JBIG, Standard Mode) at 33.6 Kbps modem speed when transmitting to another V.34 machine. The Public Switched Telephone Network (PSTN) currently supports 28.8 Kbps modem speeds or lower, depending on telephone line conditions.

*This feature is not available when the imagePASS-C1 is installed.

Workflow Management Made Easy

Exclusive functionality and information management...

The Color imageRUNNER C3200 hosts a number of memory-enabled functions that allow for greater document storage, creation, and manipulation capabilities.

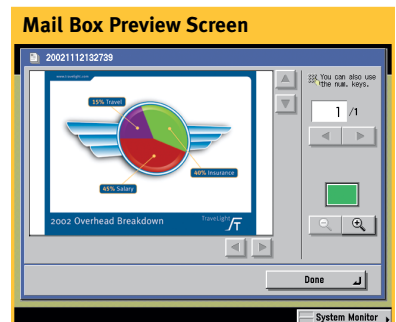
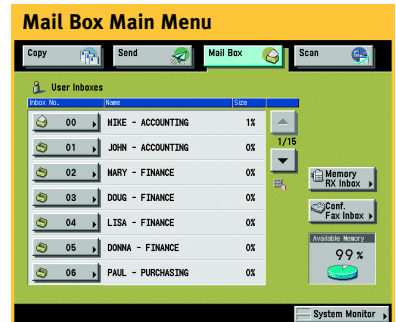
Mail Box

Not only can the Color imageRUNNER C3200 scan and send documents to external destinations, it can also store them internally in a dedicated portion of the system's standard 40GB hard disk drive. This value-add capability allows the Color imageRUNNER C3200 to serve as a virtual document repository—at no additional cost. Organize and name up to 100 User Inboxes by employee, project, department, or document type for easy identification, and may be password-protected for added security—whatever works best for your business.

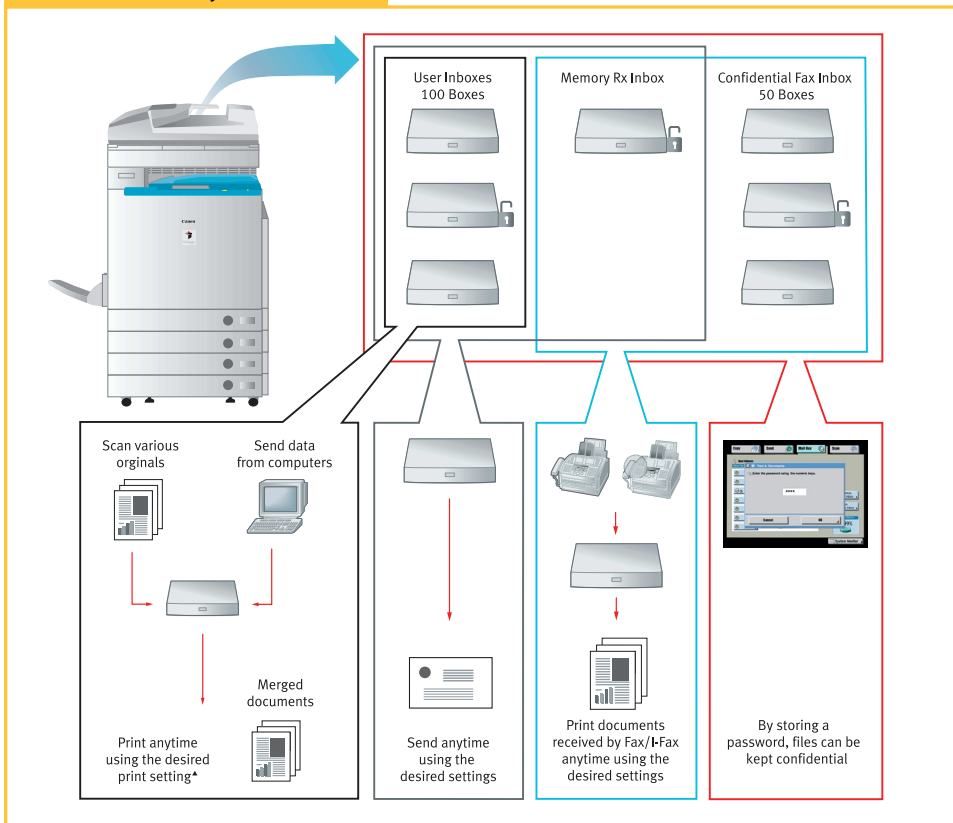
Documents can be sent directly to the Mail Box by scanning them and selecting the desired destination, or through the optional

Universal Send function. You can even send documents to a Mail Box from your computer with the appropriate Print Driver. Users can then view stored images from a connected PC via a Web browser or at the system's full-color LCD panel. To save time, you can even perform basic edit functions such as framing and blanking right at the device; later you can access or delete files, merge them with other documents, and print them with the desired settings.

What's more, the Color imageRUNNER C3200's Mail Box function offers a Memory Reception Inbox and 50 Confidential Fax Inboxes for secured receiving of inbound documents.



Mail Box Functionality



*Some functions are not available when printing documents that are sent from a computer.

Get the control you want to manage resources from anywhere...

Like all Canon networked systems, the Color imageRUNNER C3200 comes equipped with a comprehensive set of utilities and features designed to simplify operation, management, and security.

Department ID Mode

Enable the Color imageRUNNER C3200's Department ID mode to limit system access to those users assigned valid IDs and passwords; set volume ceilings, and restrict or enable access to color and black-and-white copy, scan, and print functions for up to 1,000 departments or users. The optional Control Card/Card Reader-D1 system manages usage through the use of intelligent cards that must be inserted in the system before granting access to functions.

Security Kit A1-P

Your corporate information is a vital asset, and one that should be protected at all times. For this reason, Canon offers the Security Kit A1-P, a software package that initiates the overwriting of hard disks and completely erases previously stored data, safeguarding critical information and protecting corporate interests.

Remote UI

This pre-installed utility enables end-users to check system status and configuration, access Mail Boxes, view stored documents, and more—using only a standard Web browser. Simply input the IP address of the target device, and real-time system information is at your fingertips. Remote UI enables administrators to import and export detailed device settings and address books to and from another Color imageRUNNER C3200. As a result, configuring multiple units over the network has never been easier.

NetSpot® Suite

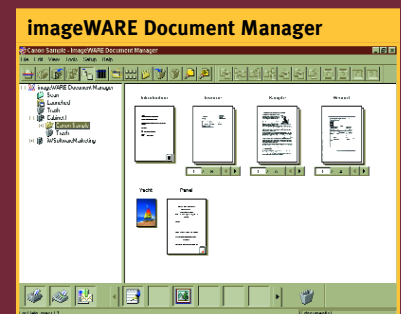
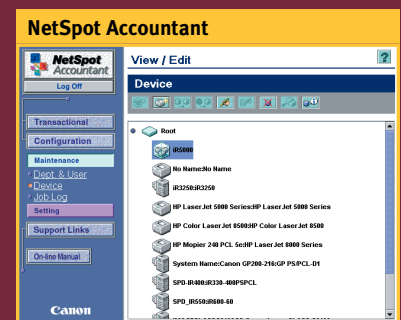
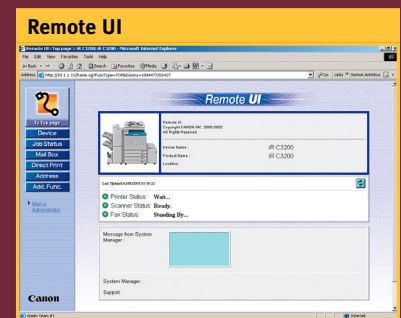
To truly support customer requirements, networked devices must be easy to install, seamlessly integrate with existing network management applications, and permit management from anywhere in the enterprise. Canon's comprehensive solution to these customer requirements is embodied within Canon's NetSpot Suite. Canon's NetSpot Suite is a group of software utilities designed to ease the administrative burdens associated with installing, monitoring, and managing Canon and third-party print devices on corporate enterprise networks.

imageWARE™ Office Software Suite

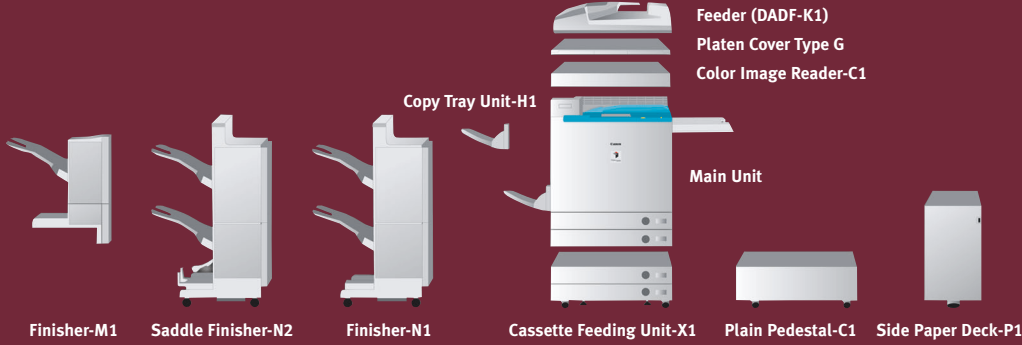
Designed for improving productivity through information-sharing and knowledge-management, Canon's imageWARE Office Software Suite can capture, manage, and distribute all kinds of documents to and from virtually anywhere. View color thumbnails of images stored in Color imageRUNNER C3200 Mail Boxes from your desktop; simplify document creation and preparation tasks for color printing; quickly search through print-ready documents; and share documents in PDF format to improve workflow.

eCopy Suite*

The eCopy Suite of scanning products—available as optional packages—provide enhanced document manipulation, distribution, and management capabilities for several of Canon's imageRUNNER® product offerings—including support for a variety of customer environments and dynamic links to customer corporate E-mail directories and fax servers.



*Contact your local Canon-authorized dealer for availability.



Color imageRUNNER C3200 Specifications

Technology:	Laser Electrostatic Transfer System
Developing System:	Dry Dual Component Developing System
Acceptable Originals:	Sheets, Books and Three-dimensional Objects (Up to 4.4 lb./2kg) 11" x 17"
Max. Original Size:	11" x 17"
Copy/Print Sizes	
Cassette Feeding:	EXEC, STMT-R, LTR-R, LTR, LGL, 11" x 17," 12" x 18"
Optional Paper Deck:	LTR
Stack Bypass:	3-5/16" x 5-7/8" to 12-5/8" x 18" (100mm x 148mm to 320mm x 457mm)
Magnification	
Standard Mode:	100%
Preset Reduction:	25%, 50%, 64%, 73%, 78%
Preset Enlargement:	121%, 129%, 200%, 400%
Zoom Mode:	25% - 400% (in 1% Increments)
Copy/Print Speeds (Letter):	32 ppm (Color and B/W)
First-copy Time:	13.1 Seconds (Color) 9.8 Seconds (B/W)
Warm-up Time:	6 Minutes Max. After Powering On (68° F/20° C) 6 Minutes From Sleep Mode (Approx.) 30 Seconds From Low-power Mode
Image Server Memory:	Standard 768MB RAM/40GB HDD
Resolution:	600 dpi x 600 dpi (Scanning) Up to 2400 dpi equivalent x 600 dpi (Printing)
Halftone:	256 Gradients
Copy Exposure:	Automatic or Manual (9 Levels)
Paper-feeding	
Standard:	Dual 550-sheet Paper Cassettes (1,100 Sheets; 20 lb. Bond/80gsm) Stack Bypass (100 Sheets; 20 lb. Bond)
Optional:	Dual 550-sheet Paper Cassettes (1,100 Sheets; 20 lb. Bond) Paper Deck (2,700 Sheets; 20 lb. Bond)
Acceptable Paper Weights	
Cassettes:	17 lb. Bond to 110 lb. Index (64gsm - 209gsm) and Transparency
Stack Bypass:	17 lb. Bond to 140 lb. Index (64gsm - 253gsm) and Transparency
Duplexing:	Standard Automatic Trayless Duplexing
Max. Mail Boxes Supported:	100
Max. Copy Reservation:	5
Multiple Copies:	1 to 999
Network Interface:	10/100 Base-T (RJ-45)
Optional Send Functions	
Sending Methods:	E-mail, I-fax, Super G3 Fax (Optional) File Server (IPX, FTP, SMB)
Address Book Capacity:	1,800
File Format:	B/W: TIFF, MTIFF, PDF Color: JPEG, PDF
Sending Sizes:	STMT to 11" x 17"
Power Source:	120V AC, 60Hz, 15A

Dimensions (H x W x D) (Printer and Reader):	31-1/2" x 24-3/8" x 31" (799mm x 620mm x 786mm)
Weight (Printer and Reader):	Approximately 277 lb. (126kg)
Duplexing Automatic Document Feeder-K1 (Optional)	
Acceptable Originals:	STMT-R, LTR-R, LTR, LGL, 11" x 17"
Acceptable Paper Weights:	14 lb. Bond to 28 lb. Bond (52gsm to 105gsm)
Tray Capacity:	STMT-R, LTR-R, LTR - 30 Sheets (20 lb. Bond) LGL, 11" x 17" - 15 Sheets (20 lb. Bond)
Cassette Feeding Unit-X1 (Optional)	
Paper Capacity:	Dual 550-sheet Paper Cassettes (1,100 Sheets; 20 lb. Bond)
Acceptable Paper Sizes:	EXEC, STMT-R, LTR-R, LTR, LGL, 11" x 17," 12" x 18"
Acceptable Paper Weights:	17 lb. Bond to 110 lb. Index
Side Paper Deck-P1 (Optional)	
Paper Deck Capacity:	2,700 Sheets (20 lb. Bond)
Paper Size:	LTR
Acceptable Paper Weights:	17 lb. Bond to 110 lb. Index
Finisher-M1 (Optional)	
Number of Trays:	1
Tray Capacity	
No Collating, Collate and Group Mode:	STMT-R, LTR-R, LTR - 1,000 Sheets LGL, 11" x 17," 12" x 18" - 500 Sheets/30 Sets
Staple Mode (Corner):	LTR-R, LTR, LGL, 11" x 17" - 30 Sets
Max. Stapling Capacity:	30 Sheets (LTR, LTR-R), 20 Sheets (LGL), 15 Sheets (11" x 17")
Acceptable Paper Weights:	17 lb. Bond to 140 lb. Index
Finisher-N1 and Saddle Finisher-N2 (Optional)	
Number of Trays:	2
Tray Capacity	
No Collating, Collate and Group Mode:	STMT-R, LTR - 1,000 Sheets; LTR-R, LGL, 11" x 17," 12" x 18" - 500 Sheets Mixed Sizes - 300 Sheets LTR-750 Sheets/30 Sets
Staple Mode:	LTR-R, LGL, 11" x 17" - 500 Sheets/30 Sets Mixed Sizes - 150 Sheets/30 Sets
Max. Stapling Capacity:	50 Sheets (LTR), 30 Sheets (LTR-R, LGL, 11" x 17," 17 lb. to 20 lb. Bond)
Acceptable Paper Weights:	17 lb. Bond to 140 lb. Index
Available Staple Size	
Corner Stapling:	LTR-R, LTR, LGL, 11" x 17"
Double Stapling:	LTR, 11" x 17"
Saddle Stitching	
Acceptable Paper Sizes:	LTR-R, 11" x 17"
Capacity/Tray:	1 to 5 Sheets/25 Sets; 6 to 10 Sheets/15 Sets; 11 to 15 Sheets/10 Sets

Max. Stapling Capacity/Set:	15 Sheets
Folding:	V-fold
Color Network Multi-PDL Kit-A1 (Optional)	
Type:	Embedded Print Controller
Processor:	Dual Canon Custom Processor 250MHz—Shared 768MB (Std./Max.)—Shared 40GB—Shared
RAM:	768MB (Std./Max.)—Shared
Hard Disk:	40GB—Shared
PDL Support:	UFR, PCL 5c, PostScript 3 Emulation
Interface	
Standard:	10/100 Base-T (RJ-45)
Optional:	Token Ring, USB Full-speed (1.1 Equivalent)
Attachable Accessories:	USB Interface Board-A1 Token Ring Network Interface Adaptor iN-TR2
imagePASS-C1 (Optional)	
Type:	External (Back-mount) Print Controller
Processor:	Intel Mobile Pentium III 850MHz
RAM:	128MB Standard, 256MB Max.
Hard Disk:	10GB
PDL Support:	PCL 5c, Adobe PostScript 3, PDF 1.3, TIFF 6
Interface	
Standard:	10/100 Base-T (RJ-45), Parallel Port (Type B Connector)
Optional:	Token Ring
Utilities	
Standard:	WebTools,™ Command WorkStation 4, Fiery Downloader,™ Fiery Driver,™ Fiery Remote Scan, ColorWise Pro Tools, Fiery FreeForm,™ Auto Trapping/Spot-On DocBuilder Pro, Densitometer
Optional:	Token Ring Board-TB84
Attachable Accessories:	Token Ring Board-TB84
Other Optional Accessories and Utilities	
• Image Reader-C1*	
• Super G3 Fax Board-M1	
• Color Universal Send Kit-A1P	
• Resolution Switching Board-A1	
• USB Interface Board-A1	
• Token Ring Network Interface Adaptor iN-TR2	
• Plain Pedestal-C1	
• Copy Tray Unit-H1	
• Token Ring Board-TB84	
• imageRUNNER Security Kit-A1P	
• Key Switch Unit-A1	
• Platen Cover Type G	
• Card Reader-D1	
• Card Sets	
• imageWARE Suite	
• NetSpot Suite	
• eCopy Suite	
*Standard with copier model.	
For more information, please contact your local Canon-authorized dealer.	

Microsoft is a registered trademark of Microsoft Corporation in the United States and/or other countries. Adobe and PostScript are registered trademarks of Adobe Systems Incorporated in the United States and/or other countries. Intel and Pentium are registered trademarks of Intel Corporation. ColorWise is a registered trademark of Electronics for Imaging, Inc. in the U.S. Patent and Trademark Office and certain other foreign jurisdictions. Command WorkStation, DocBuilder Pro, Spot-On, WebTools, Fiery Downloader, Fiery Driver, and Fiery FreeForm are trademarks of Electronics for Imaging, Inc. Canon and NetSpot are registered trademarks, and the GENUINE logo, and Canon Know How are trademarks of Canon Inc. IMAGERUNNER is a registered trademark of Canon Inc. in the U.S. and Canada. Universal Send, Remote UI, and IMAGEWARE are trademarks, and IMAGEANYWARE is a service mark of Canon U.S.A., Inc. All other terms and product names may be trademarks or registered trademarks of their respective owners, and are hereby acknowledged.

All specifications are subject to change without notice.

Federal Law prohibits copying of certain documents. Violators may be subject to penalties. We suggest that you check with your own legal counsel. Canon U.S.A., Inc. and Canon Canada, Inc. intend to cooperate with Law Enforcement Agencies in connection with claims of unauthorized copying.

Canon KNOW HOW™

1-800-OK-CANON
www.usa.canon.com

Canon U.S.A., Inc.
One Canon Plaza
Lake Success, NY 11042

0037W074

0303-CIRC3200-100M

PRINTED ON RECYCLED
PAPER IN THE U.S.A.

